

Bela FASHION
1872



Bela FASHION
1873



Bela FASHION
1874





1872



1873



1874



1878



1879



1880



PRESENTING TO YOU NEW CATALOGUE

ZIBA

FROM BELA FASHION

PRODUCT DETAILS

< TOP >

COTTON SILK WITH HAND WORK

< BOTTOM >

SUPERIOR COTTON

< DUPATTA >

30 X 60 MODAL

Bela FASHION®

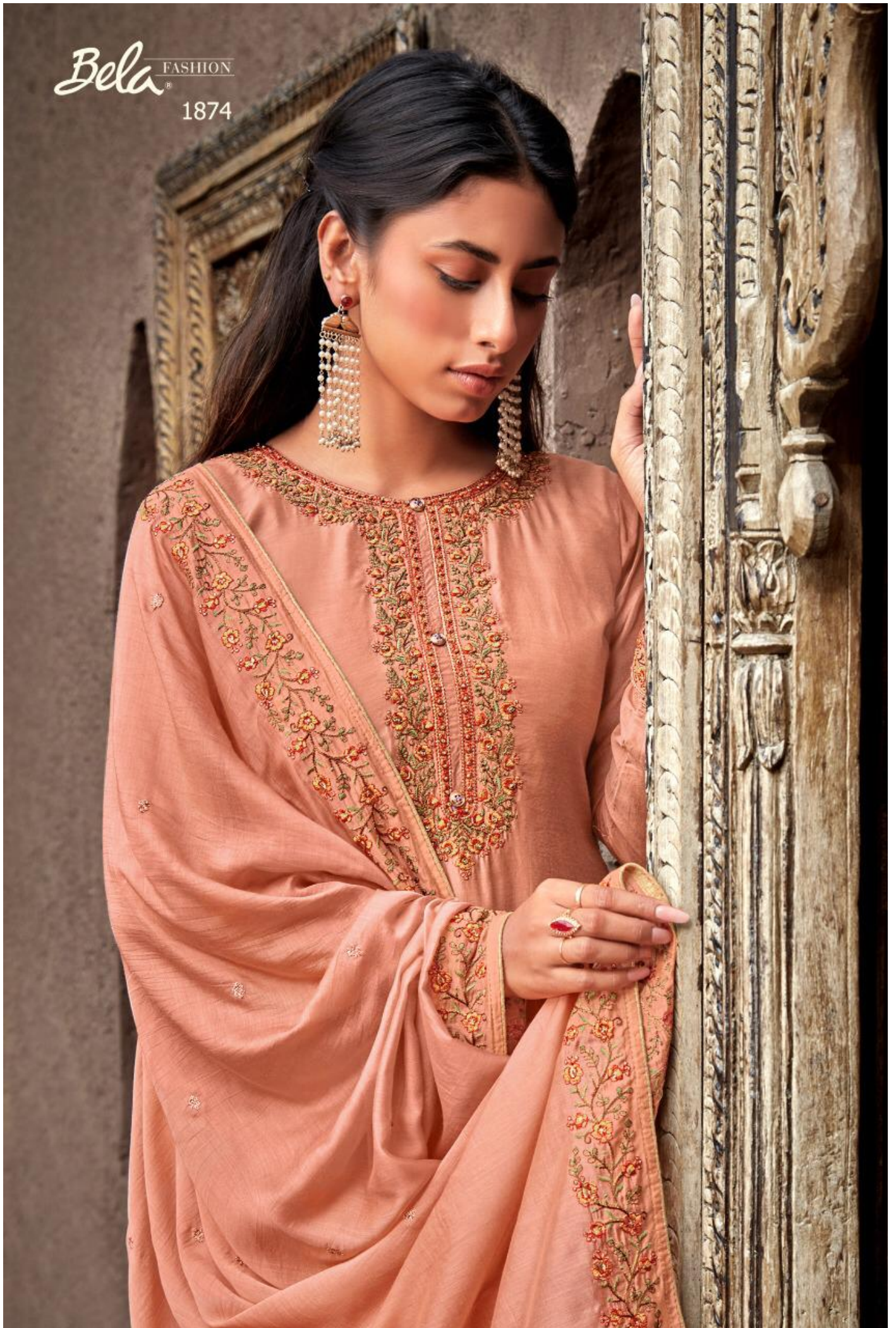
ZIBA *****

Design Number	Catalogue Name	FABRIC DETAIL	PRICE
1872	ZIBA	Top - Cotton Silk With Hand Work Bottom - Superior Cotton Dupatta - 30 x 60 Modal	1710/-
1873	ZIBA	Top - Cotton Silk With Hand Work Bottom - Superior Cotton Dupatta - 30 x 60 Modal	1710/-
1874	ZIBA	Top - Cotton Silk With Hand Work Bottom - Superior Cotton Dupatta - 30 x 60 Modal	1710/-
1875	ZIBA	Top - Cotton Silk With Hand Work Bottom - Superior Cotton Dupatta - 30 x 60 Modal	1710/-
1876	ZIBA	Top - Cotton Silk With Hand Work Bottom - Superior Cotton Dupatta - 30 x 60 Modal	1710/-
1877	ZIBA	Top - Cotton Silk With Hand Work Bottom - Superior Cotton Dupatta - 30 x 60 Modal	1710/-
1878	ZIBA	Top - Cotton Silk With Hand Work Bottom - Superior Cotton Dupatta - 30 x 60 Modal	1710/-
1879	ZIBA	Top - Cotton Silk With Hand Work Bottom - Superior Cotton Dupatta - 30 x 60 Modal	1710/-
1880	ZIBA	Top - Cotton Silk With Hand Work Bottom - Superior Cotton Dupatta - 30 x 60 Modal	1710/-

Bela FASHION
1872



Bela FASHION
1874



Bela FASHION
1875



Bela[®] FASHION

1876



Bela FASHION
1878



Bela FASHION
1877



Bela FASHION
1877



Bela FASHION
1877



Bela FASHION
1875



Bela FASHION
1878



Bela FASHION
1879



Bela FASHION
1880



Bela FASHION

1880





1875



1876



1877

Bela FASHION
ultimate in fashion
ZIBA

Top - Cotton Silk With Embroidery and Hand Work
Bottom - 60 x 60 Cotton
Dupatta - Ruhi Silk With Embroidery



Bela FASHION®

Bela[®] FASHION
ultimate in fashion

ZIBA



Bela FASHION
1873



Bela FASHION

1876



Bela[®] FASHION
1879

