

A woman with dark hair pulled back, wearing a vibrant pink and white striped sari with a gold border. She is adorned with traditional Indian jewelry, including a large gold necklace with a central medallion, a matching bracelet, and a ring. She is sitting on a white window ledge, leaning her head on her hand, looking directly at the camera. The background is a warm-toned wall with an arched window opening.

kimora[©]

A SENSE OF VERSATILITY AND
AN EPITOME OF SERENITY

R · A · B · A · B

रबाब



D. No. 2011



A SENSE OF VERSATILITY AND
AN EPITOME OF SERENITY



D. No. 2012



A SENSE OF VERSATILITY AND
AN EPILOGUE OF SERENITY



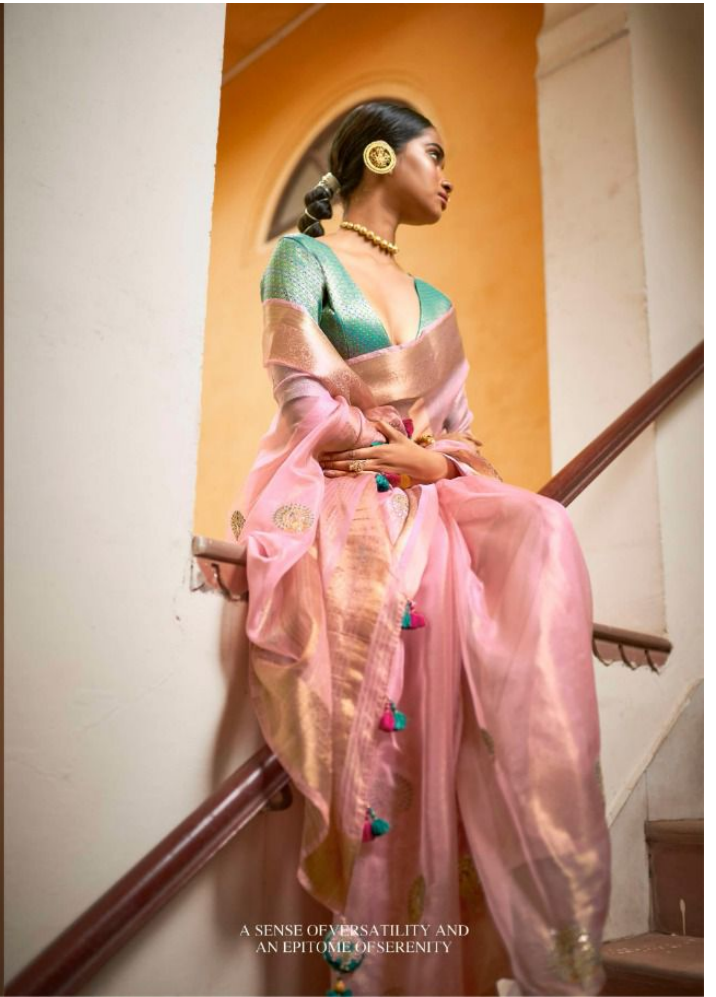
D. No. 2013



A SENSE OF VERSATILITY AND
AN EPIHOME OF SERENITY



D. No. 2014



A SENSE OF VERSATILITY AND
AN EPIHOME OF SERENITY



D. No. 2015



A SENSE OF VERSATILITY AND
AN EPIHOME OF SERENITY



D. No. 2011



D. No. 2012



D. No. 2013



D. No. 2014

KIMORA[®]

A SENSE OF VERSATILITY AND
AN EPILOGUE OF SERENITY



D. No. 2015

R·A·B·A·B

रबाब