



शुभकला

BRIDESMAID VOL-14





श्रीbhkala
1921







शुभकला

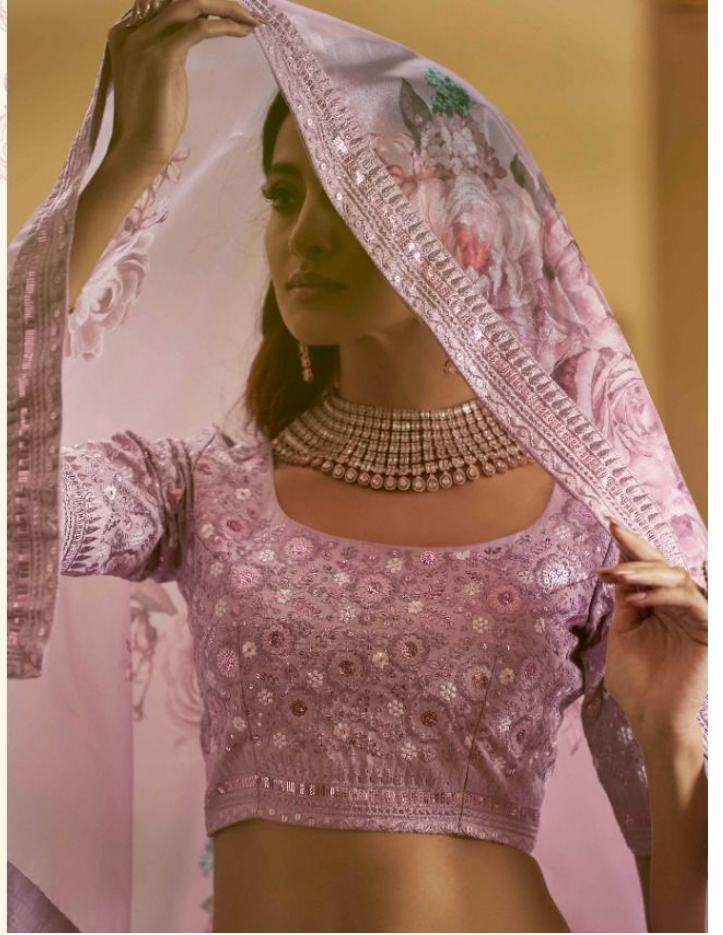


1923

शुभकला bhkala



1923





शुभकला

1924

शुभकला



1924



शुभकला



1925

BRIDESMAID VOL-14

Design NO. (SKU)	Main Color	Lehenga Fabric	Choli Fabric	Dupatta Fabric	Size (Semi-Stitched)	Lehenga Work	Choli Work	Dupatta Work	Choli Length MTR	Lehenga Length MTR	Dupatta Length MTR	Weight
1921	Deep Pink	Art Silk	Art Silk	Organza	UPTO 42 BUST AND WAIST	Thread with Sequince Embroidered work	Thread with Sequince Embroidered work	Thread with Sequince embroidered lace on border with all over print	1 MTR	42 INCH	2.40 MTR	2 KG
1922	Beige	Art Silk	Art Silk	Organza	UPTO 42 BUST AND WAIST	Thread with Sequince Embroidered work	Thread with Sequince Embroidered work	Thread with Sequince embroidered lace on border with all over print	1 MTR	42 INCH	2.40 MTR	2 KG
1923	Dusty Pink	Art Silk	Art Silk	Organza	UPTO 42 BUST AND WAIST	Thread with Sequince Embroidered work	Thread with Sequince Embroidered work	Thread with Sequince embroidered lace on border with all over print	1 MTR	42 INCH	2.40 MTR	2 KG
1924	Lavender	Silk	Silk	NET	UPTO 42 BUST AND WAIST	Thread with Sequince Embroidered work	Thread with Sequince Embroidered work	Thread with Sequince Embroidered work	1 MTR	42 INCH	2.40 MTR	2 KG
1925	Dusty Pink	Silk	Silk	NET	UPTO 42 BUST AND WAIST	Thread with Sequince Embroidered work	Thread with Sequince Embroidered work	Thread with Sequince Embroidered work	1 MTR	42 INCH	2.40 MTR	2 KG

THIS BOOK / CATALOGUE / LOGO / ARE PROTECTED UNDER COPYRIGHT ACT.
 AN ILLEGAL/UNAUTHORIZED REPRINT, PUBLISHING, REPRODUCTION, DISTRIBUTION AND MODIFICATION OF ANY IMAGES, PHOTOGRAPHS AND PRODUCTS,
 TOTALLY OR IN PART, FOR ANY PURPOSE, REASON OR CAUSE IS STRICTLY PROHIBITED AND PUNISHABLE UNDER LAW.









