

*Rose* S-95



S-95 A



S-95 B



S-95 C



SHANAYA®



## Rose

S-95 A

### WASHING INSTRUCTIONS

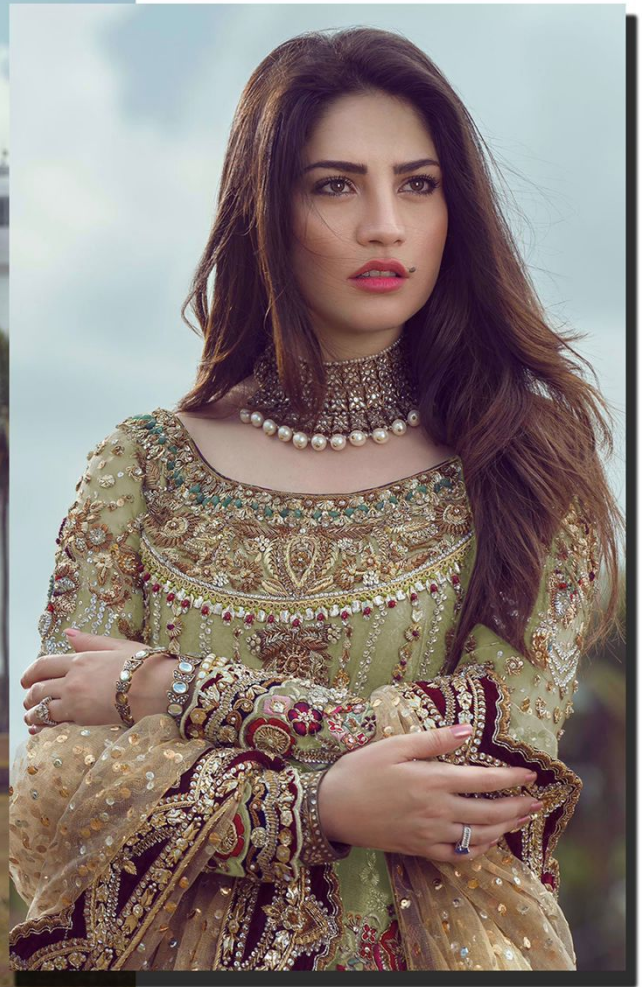
DO NOT USE ANY TYPE OF BLEACH OR STAIN REMOVING CHEMICALS BEFORE CUTTING / STITCHING, FABRIC SHOULD BE SOAKED IN WATER ( ALL COMPONENTS SEPARATELY ) FOR 15 MINUTES

DO NOT KEEP WET FABRIC IN TWISTED FORM IN ORDER TO AVOID COPY MARKS | WASH COLOURED AND WHITE FABRICS SEPARATELY

IRON CLOTHES AT MODERATE TEMPERATURE | DO NOT DRY FABRIC IN DIRECT SUNLIGHT ( EXTRA LACES, HANGINGS AND ACCESSORIES ARE NOT INCLUDED )



SHANAYA®



## Rose

S-95 C

### WASHING INSTRUCTIONS

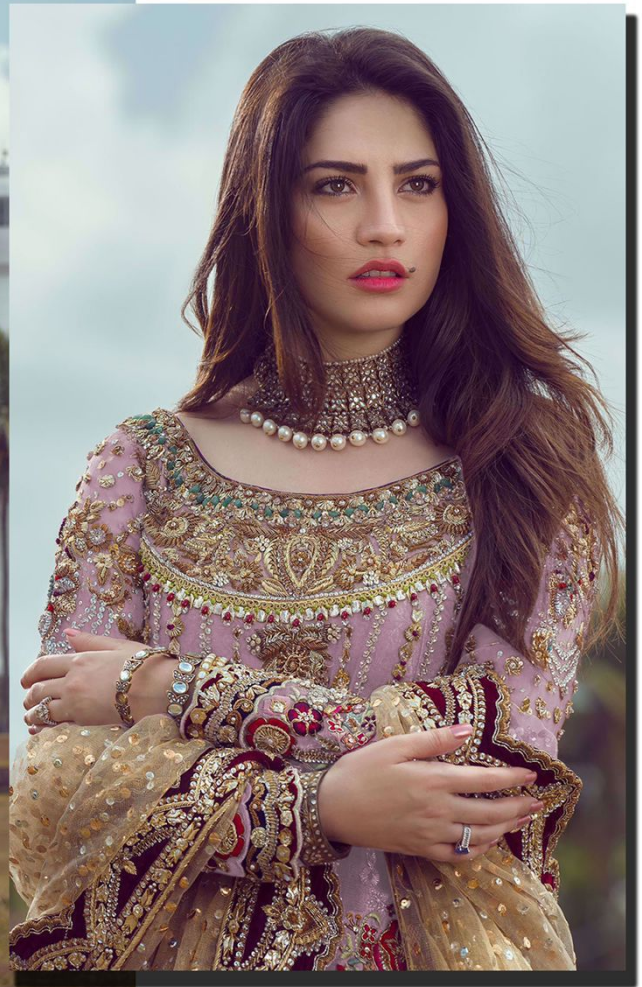
DO NOT USE ANY TYPE OF BLEACH OR STAIN REMOVING CHEMICALS BEFORE CUTTING / STITCHING , FABRIC SHOULD BE SOAKED IN WATER ( ALL COMPONENTS SEPARATELY ) FOR 15 MINUTES

DO NOT KEEP WET FABRIC IN TWISTED FORM IN ORDER TO AVOID COPY MARKS | WASH COLOURED AND WHITE FABRICS SEPARATELY

IRON CLOTHES AT MODERATE TEMPERATURE | DO NOT DRY FABRIC IN DIRECT SUNLIGHT ( EXTRA LACES, HANGINGS AND ACCESSORIES ARE NOT INCLUDED )



**SHANAYA**<sup>®</sup>



## Rose

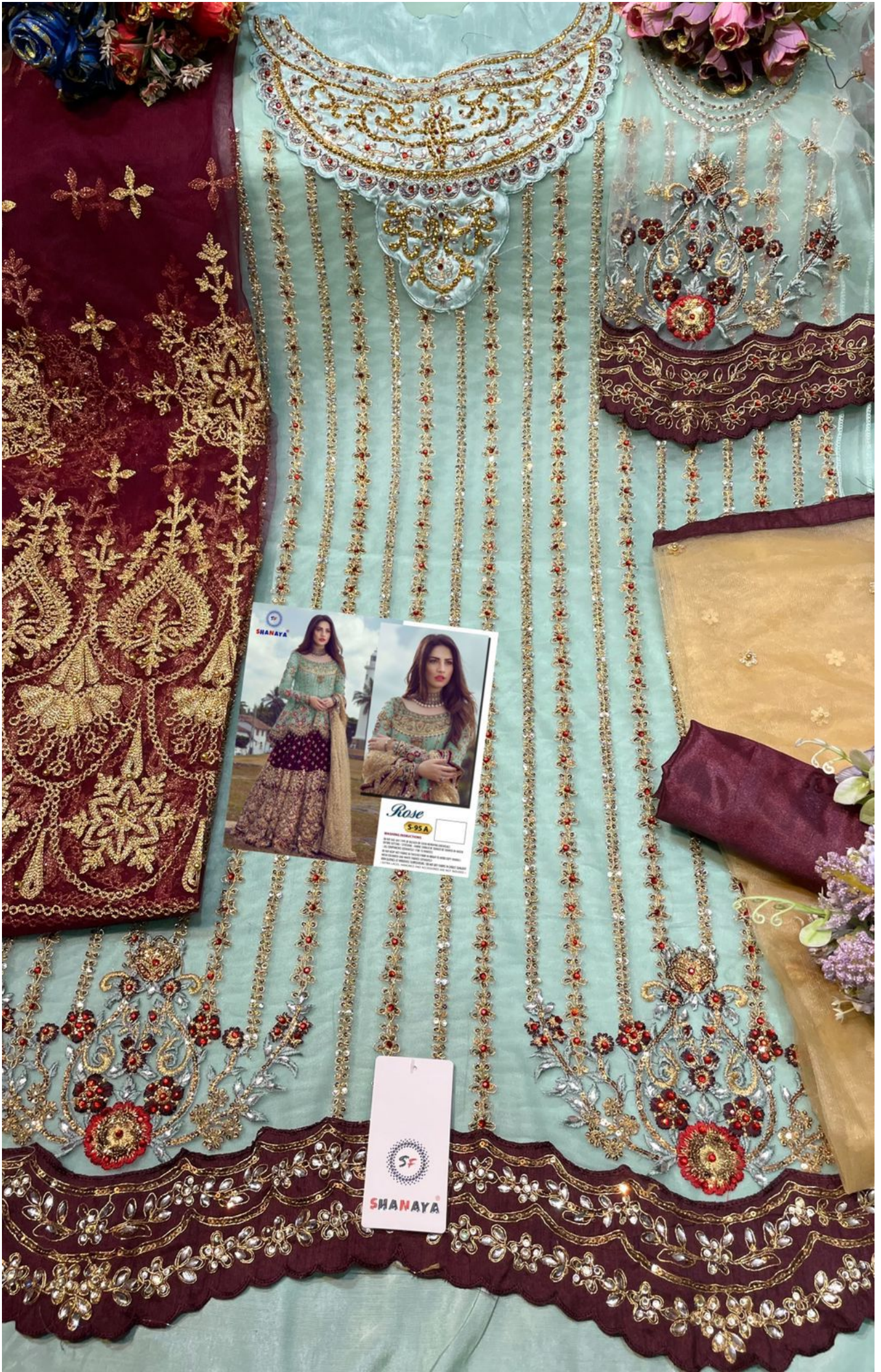
**S-95 B**

### WASHING INSTRUCTIONS

DO NOT USE ANY TYPE OF BLEACH OR STAIN REMOVING CHEMICALS BEFORE CUTTING / STITCHING, FABRIC SHOULD BE SOAKED IN WATER ( ALL COMPONENTS SEPARATELY ) FOR 15 MINUTES

DO NOT KEEP WET FABRIC IN TWISTED FORM IN ORDER TO AVOID COPY MARKS | WASH COLOURED AND WHITE FABRICS SEPARATELY

IRON CLOTHES AT MODERATE TEMPERATURE | DO NOT DRY FABRIC IN DIRECT SUNLIGHT ( EXTRA LACES, HANGINGS AND ACCESSORIES ARE NOT INCLUDED )



**Rose**  
S-95A

**SHANAYA**



Rose  
S-95 B



