



#CHIKANKARI-01-A



**TOP-** FOX GEORGETTE WITH HEAVY EMBROIDERY  
**BOTTOM-** DULL SANTOON  
**DUPATTA -** CHINON LESS WORK

- Ⓟ DRY CLEAN ONLY.
- ✖ DO NOT USE ANY BLEACH OR STAIN REMOVING CHEMICAL.
- ☎ IRON THE FABRIC AT MODERATE TEMPERATURE.





#CHIKANKARI-01-C



TOP- FOX GEORGETTE WITH HEAVY EMBROIDERY  
BOTTOM- DULL SANTOON  
DUPATTA - CHINON LESS WORK

- Ⓟ DRY CLEAN ONLY.
- ✂ DO NOT USE ANY BLEACH OR STAIN REMOVING CHEMICAL.
- ☎ IRON THE FABRIC AT MODERATE TEMPERATURE.







#CHIKANKARI-01-B



TOP- FOX GEORGETTE WITH HEAVY EMBROIDERY  
BOTTOM- DULL SANTOON  
DUPATTA - CHINON LESS WORK

- Ⓟ DRY CLEAN ONLY.
- ✘ DO NOT USE ANY BLEACH OR STAIN REMOVING CHEMICAL.
- ☎ IRON THE FABRIC AT MODERATE TEMPERATURE.





#CHIKANKARI-01-D



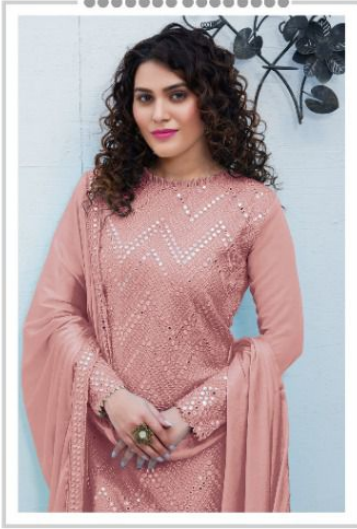
**TOP-** FOX GEORGETTE WITH HEAVY EMBROIDERY  
**BOTTOM-** DULL SANTOON  
**DUPATTA -** CHINON LESS WORK

- Ⓟ DRY CLEAN ONLY.
- ✂ DO NOT USE ANY BLEACH OR STAIN REMOVING CHEMICAL.
- 🧊 IRON THE FABRIC AT MODERATE TEMPERATURE.





**Ramsha**  
CHIKANKARI - NX



#CHIKANKARI-01-A



#CHIKANKARI-01-B

**Ramsha**  
CHIKANKARI - NX



#CHIKANKARI-01-C



#CHIKANKARI-01-D





*Sachin Kari*  
**SACHIN KARI-01-A**

2 PIECE SET  
TOP: 3/4 SLEEVE, SHIRT NECK, WITH HEAVY EMBROIDERY  
BOTTOM: FULL LENGTH, SHIRT NECK, WITH HEAVY EMBROIDERY  
MATERIAL: 100% COTTON

STYLING: ANITA DIXIT  
PHOTOGRAPHY: ANITA DIXIT  
DESIGNER: ANITA DIXIT









**Rasmi**  
#CHIKANKARI-01-C  
100% COTON GEORGETTE WITH HEAVY ZIGZAG  
MUTTERI - PINK, SANDWICH  
PROFESSOR: CHIKANKARI WORK  
WASH IN COLD WATER  
DO NOT BLEACH  
DO NOT IRON  
DO NOT DRY CLEAN  
DO NOT USE CHEMICAL DYEING  
DO NOT USE CHEMICAL BLEACHING



