



#R-406-A

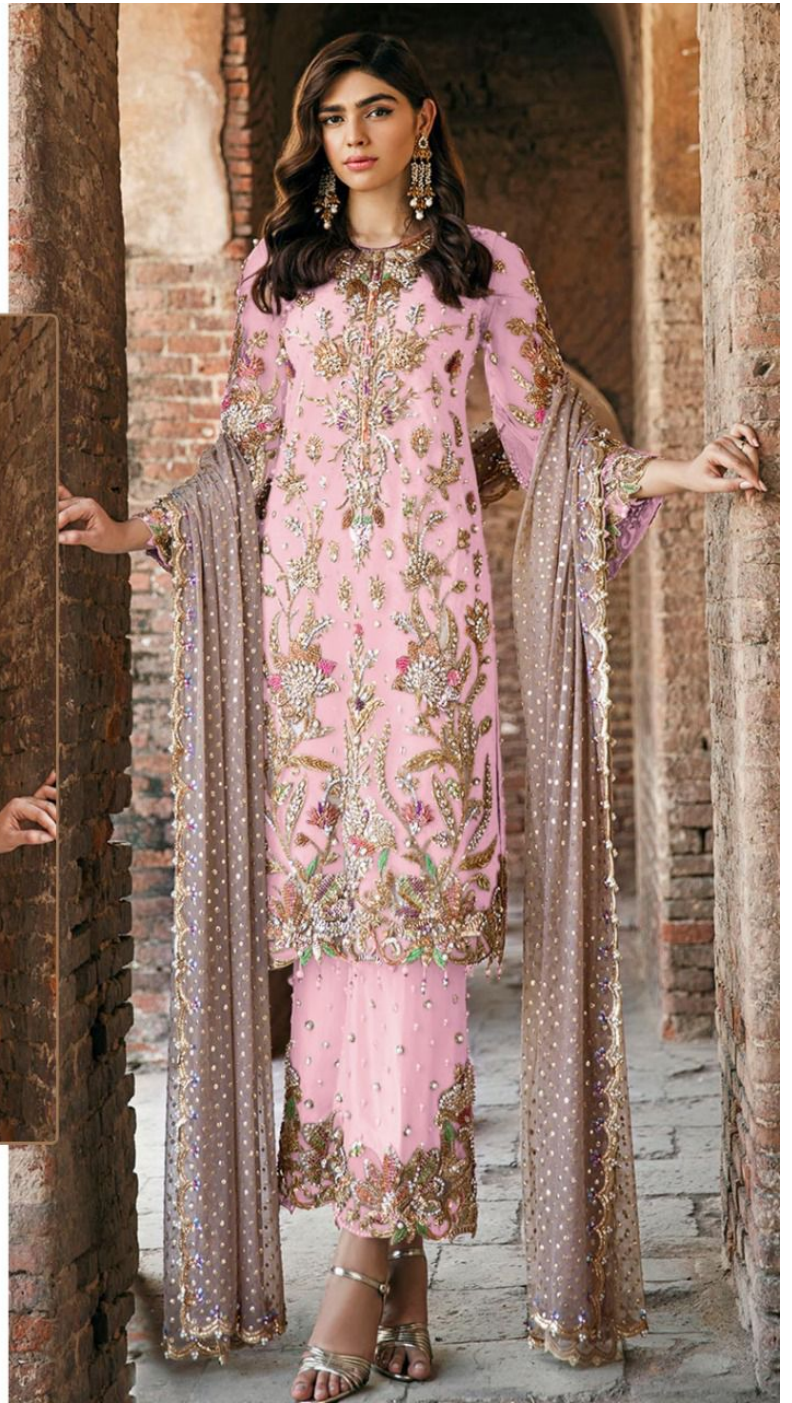
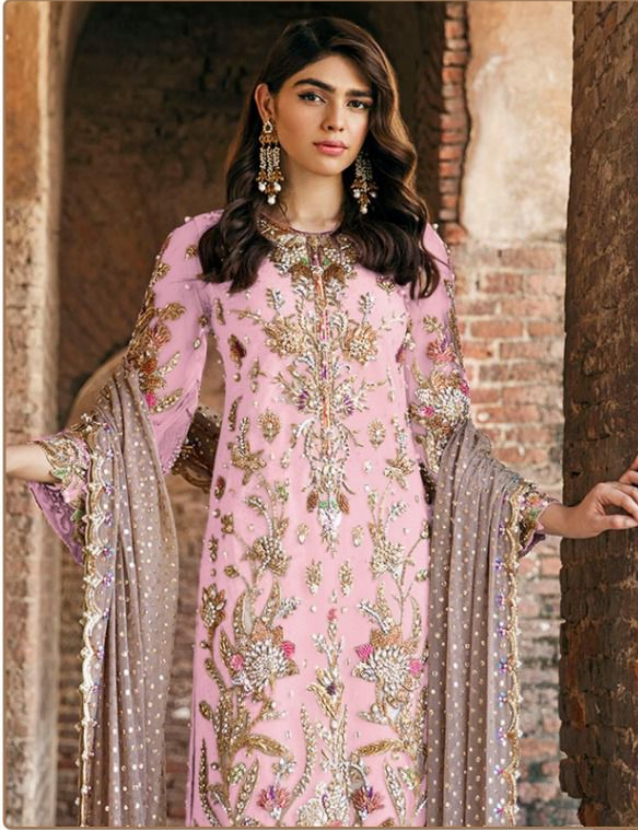


TOP- FOX GEORGETTE WITH HEAVY EMBROIDERY
BOTTOM- SANTOON
DUPATTA - NAMEEN WITH EMBROIDERY

Ⓟ DRY CLEAN ONLY.
ⓧ DO NOT USE ANY BLEACH OR STAIN REMOVING CHEMICAL.
☎ IRON THE FABRIC AT MODERATE TEMPERATURE.



#R-406-B

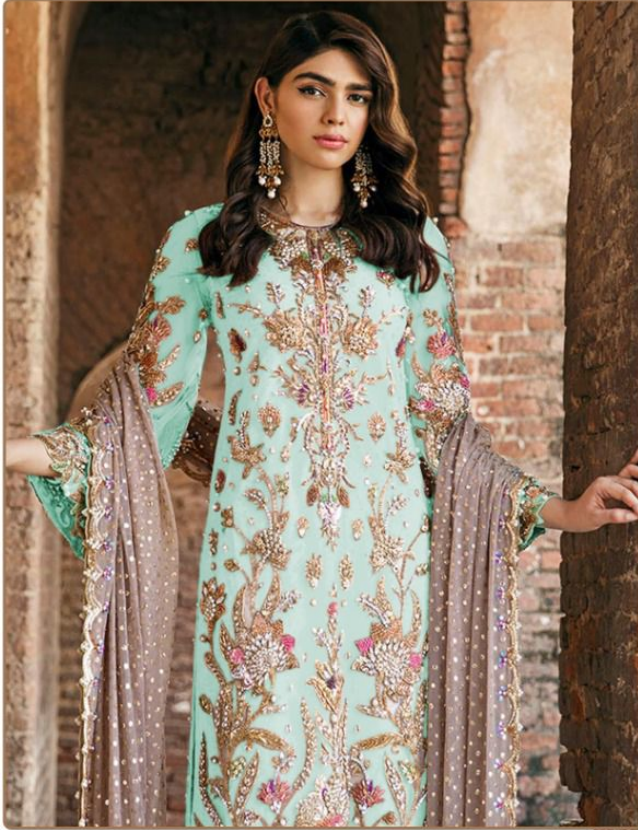


TOP- FOX GEORGETTE WITH HEAVY EMBROIDERY
BOTTOM- SANTOON
DUPATTA - NAMEEN WITH EMBROIDERY

Ⓟ DRY CLEAN ONLY.
ⓧ DO NOT USE ANY BLEACH OR STAIN REMOVING CHEMICAL.
☎ IRON THE FABRIC AT MODERATE TEMPERATURE.



#R-406-C



TOP- FOX GEORGETTE WITH HEAVY EMBROIDERY
BOTTOM- SANTOON
DUPATTA - NAMEEN WITH EMBROIDERY

Ⓟ DRY CLEAN ONLY.
ⓧ DO NOT USE ANY BLEACH OR STAIN REMOVING CHEMICAL.
☎ IRON THE FABRIC AT MODERATE TEMPERATURE.



#R-406-D

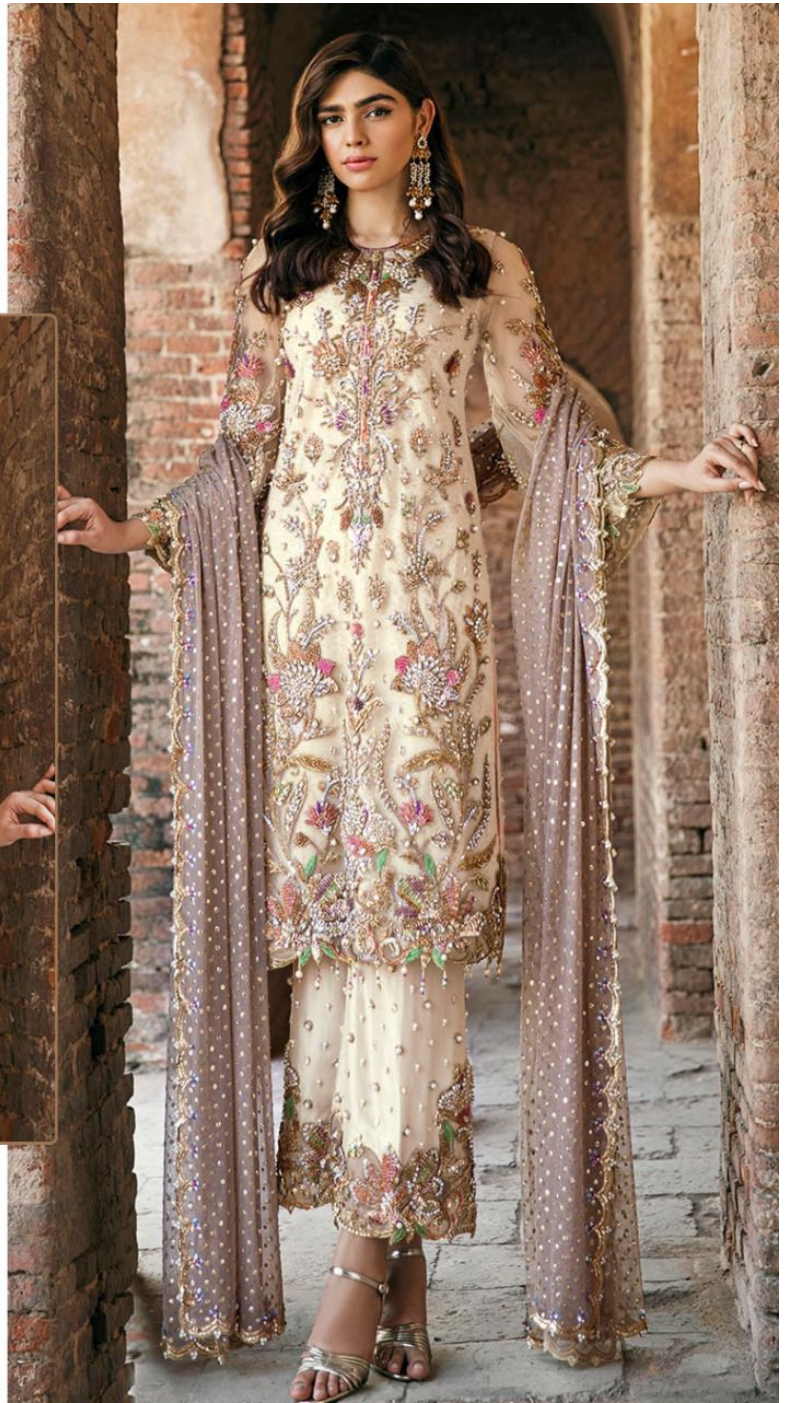
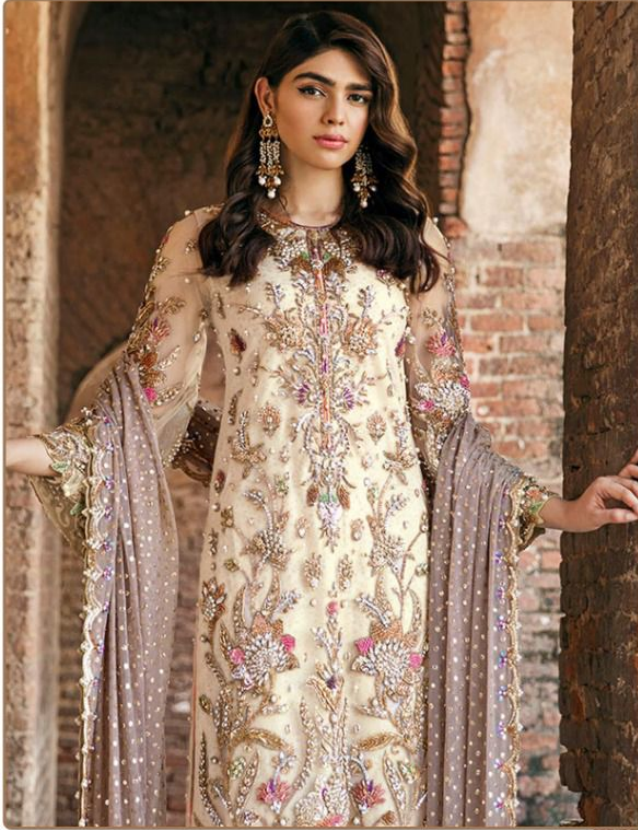


TOP- FOX GEORGETTE WITH HEAVY EMBROIDERY
BOTTOM- SANTOON
DUPATTA - NAMEEN WITH EMBROIDERY

Ⓟ DRY CLEAN ONLY.
ⓧ DO NOT USE ANY BLEACH OR STAIN REMOVING CHEMICAL.
Ⓡ IRON THE FABRIC AT MODERATE TEMPERATURE.



#R-406-E



TOP- FOX GEORGETTE WITH HEAVY EMBROIDERY
BOTTOM- SANTOON
DUPATTA - NAMEEN WITH EMBROIDERY

Ⓟ DRY CLEAN ONLY.
ⓧ DO NOT USE ANY BLEACH OR STAIN REMOVING CHEMICAL.
☎ IRON THE FABRIC AT MODERATE TEMPERATURE.

Ramsha®
406-NX



Ramsha®
406-NX



#R-406-A



#R-406-B



#R-406-C



#R-406-D



#R-406-E



Emb Sleeves

Emb Front

Emb Chiffon Dupatta

Patch





Emb Sleeves

Emb Front

Emb Chiffon Dupatta



Bottom Patches



Emb Sleeves

Emb Front

Emb Chiffon Dupatta

Bottom Patches

Ramska
#R-406-C

FOR GRINGETTE WITH HEAVY EMBROIDERY
WASH - SANTOON
DUPATTA - NAMEEN WITH EMBROIDERY

DO NOT CLEAN DRY
DO NOT USE ANY BLEACH OR STAIN REMOVING CHEMICAL
IRON THE FABRIC AT MODERATE TEMPERATURE.



Emb Chiffon Dupatta

Emb Front

Emb Sleeves

Bottom Patches





Emb Sleeves

Emb Front

Emb Chiffon Dupatta

Bottom Patches

Ransha
#R-406-D

TOP: POSE COORDINATE WITH HEAVY EMBROIDERY
BOTTOM: SAVDOOM
DUPATTA: NAMDEEN WITH EMBROIDERY

© ONE CLEAR ONLY
DO NOT USE HOT IRON OR STEAM IRONING CHEMICAL
WASH IN COLD WATER AT NORMAL TEMPERATURE